



REPUBLIC OF KENYA



BUSIA COUNTY AGRI-NUTRITION IMPLEMENTATION STRATEGY (CANIS)



2024 - 2028

FOREWORD

The County Government of Busia is committed to ensuring that its residents have access to safe food of acceptable quality in sufficient quantity to meet their nutrition and health needs. The vision of a malnutrition-free country is stipulated in the Constitution of Kenya article 43 (1), the National Food and Nutrition Security Policy (FNSP) 2011, and the Kenya Health Policy 2012-2030.

There is significant acknowledgement that nutrition sensitive Agriculture interventions can significantly reduce all types of malnutrition including micronutrient deficiencies, by revamping food systems from production to consumption for improved nutrition outcomes. Agricultural productivity and food production currently is affected by rapid population growth coupled with climate change, thus impacting on food systems and rural livelihoods leading to major shifts in the way food is produced, distributed and consumed and to new food security, nutrition and health challenges.

The Busia County Agri-Nutrition Implementation Strategy (CANIS) 2024-2029 is aligned with the Kenya Agri-Nutrition Implementation Strategy (KANIS 2020 - 2025), Busia County Health Sector Strategic & Implementation Plan (CHSSIP) 2018-2023 and County Integrated development Plan (CIDP) 2018 - 2023. The development of the CANIS is anchored on the commitment by the County to adopt a nutrition-sensitive approach and mainstream nutrition in its various investments. The CANIS will facilitate mainstreaming of nutrition sensitive agriculture interventions budgeting process hence, allocation of resources to NSA programmes towards nutrition resource mobilization within and without the county borders. The document also emphasizes multi-sectoral coordination and collaboration approach in planning, fostering departure from past trends in addressing the nutrition agenda within the county.

The strategy was developed through a consultative process involving all stakeholders in Agri nutrition as well as other line county departments. This included the county health leadership, county government line departments, national line ministries, development partners and implementing partners. The implementation of the CANIS will cover five years beginning July 2024 to June 2029. The County will monitor implementation of the CANIS, conduct mid-term review to assess progress and end term evaluation to inform priorities for the subsequent CANIS planning period.

We are, therefore, confident that the implementation of this strategy will effectively help fight against all forms of malnutrition to Busia County residents.

HON. Dr. George S. Mukok,



County Executive Committee Member (CECM),

**Department of Smart Agriculture, Livestock, Fisheries Blue Economy and Agribusiness,
Busia County Government.**

ACKNOWLEDGEMENT

Busia County wishes to acknowledge with deep gratitude the effort by technical working group that work tirelessly to ensure that CANIS was prepared within the strict timelines thereby making this strategy a reality for Busia. Special thanks to Nutrition in City Ecosystem Project (NICE Project), Self Help Africa (SHA) for the technical, financial support and facilitation of formulation process.

Appreciation goes to Busia County Governor, H.E Dr Paul Otuoma, the Deputy Governor and CECM Health H.E Arthur Odera, the County Executive Committee member for Smart Agriculture, Livestock, Fisheries, Blue Economy and Agri-Business, appreciation to County Chief officers. Additional appreciation goes to Baraka of the national Agri-Nutrition Unit of the State Department of Agriculture and Livestock for his participation and encouragement.

We appreciate the contribution from the key members of the Agri-Nutrition Linkages Working Group and specifically the members of departments consisting of department of Smart Agriculture, Livestock, Fisheries, Blue Economy and Agri-Business, Department of Health and Sanitation, Agri nutrition Unit, Department of Education and industrial skills development, Department of Finance, Department of Children and Department of Water and irrigation.

Special thanks to our partners Nutrition International, ADS, and Practical Action for their consistent engagement from initial drafting, through technical reviews and finalization of the strategy document.

It is from the very vibrant and selfless engagements of various stakeholders throughout the county that we have put forth a vision, setting us on a trajectory that will ensure achievement of county commitments towards Agri-Nutrition. We are grateful to all who contributed in one way or another in the development of this strategy document, including those we may not have mentioned. Kindly take this acknowledgement as an expression of sincere gratitude.

Mr. Elijah Mwaro,

**Chief Officer Smart Agriculture, Fisheries, Blue Economy and Agribusiness,
Busia County Government**

Ms. Mercy Imo,



**Chief Officer Livestock Production and Veterinary Services,
Busia County Government.**

TABLE OF CONTENT

Foreword.....	i
Acknowledgement.....	ii
Acronyms and abbreviations.....	iv
Glossary	v
Preamble.....	vi
1.0: Introduction	1
1.2 Overview of Agriculture situation.....	4
1.2.1 Extension Delivery Services.....	4
1.3 Rationale for Agri-Nutrition strategy.....	4
1.4 Goal and Strategic Objectives of CANIS.....	5
1.4.2 Strategic Objectives	5
Section 2: Agri-nutrition Implementation Strategy Focus Areas	7
Focus area 1: Leadership, advocacy, governance and coordination.....	7
Focus Area 2: Strengthen Service Delivery Systems and Structures for provision of Equitable and Quality Nutrition Sensitive Agriculture Interventions	7
Focus area 3: Increase the availability, accessibility, and consumption of safe, diverse, and nutritious foods at all stages of the food chain	8
Strategic Outcomes	9
Focus Area 4: Harness Resources through Public- Private Initiatives to support Nutrition Sensitive Agricultural Interventions	10
Focus Area 5: Community Empowerment to Engage in Viable Nutrition Sensitive Agriculture (NSA) Initiatives	11
Section 3: Multi-sectoral Institutional collaboration for Agri-nutrition programming	13
MSN Coordination Framework.....	16
3.12 County Agri-Nutrition Secretariat (CAN-SEC)	17
3.13 County Agri-Nutrition Technical Working Group.....	17
3.15 Ward Agri-Nutrition Technical Working Group	18
3.2 Monitoring and evaluation of CANIS	18
3.2.1Monitoring process	18
3.2.3 Evaluation of the CANIS.....	18
Agri-Nutrition Program Risk and Mitigation Matrix	18
Section 4: Agri-Nutrition Implementation Plan.....	22
Appendices	23
Appendix 1: List of Contributors toward the CANIS.....	23
Appendix 2: Agri-Nutrition Implementation Plan.....	25
Our Partners.....	39

ACRONYMS AND ABBREVIATIONS

ALV	African leafy vegetable
AMS	Agricultural Mechanization Services
ANIS	Agri-Nutrition Implementation Strategy
ANU	Agri-Nutrition Unit
ATC	Agricultural Training Centre
CNTF	County Nutrition Technical Forum
CANIS	County Agri-Nutrition Implementation Strategy
CBO	Community-based organization
CECM	County Executive Committee Member
CGB	County Government of Busia
FAO	Food and Agriculture Organization
FBO	Faith-based organization
FNSP	Food and Nutrition Security Policy
FSP	Food Systems platform
ICT	Information and communication technology
KHPC	Kenya Health Population Census
KNBS	Kenya National Bureau of Statistics
LM	Lower Midland
LMS	Livestock Market Systems
M&E	Monitoring and Evaluation
MIS	Management information system
MSN	Multi-Sectral nutrition
NGO	Non-governmental organization
NSA	Nutrition-sensitive agriculture
PLW	Pregnant and lactating women
SDG	Sustainable Development Goal
SME	Small to medium enterprise
TORs	Terms of reference

GLOSSARY

- **Agri-food systems:** It refers to constellation of social, political economic and environmental processes and actors involved in primary production of food and non-food agricultural products, as well as in food storage, aggregation, post-harvest handling, transportation, processing, distribution, marketing, disposal and consumption
- **Dietary diversity:** Is a qualitative measure of food consumption that reflects household access to a variety of foods, and is also a proxy for nutrient adequacy of the diet of individuals
- **Multi-Sectoral Team:** A group involving various sectors, both state and non-state, working collaboratively on a common goal, such as Nutrition-Sensitive Agriculture (NSA).
- **Technical Working Group (TWG):** A specialized team responsible for planning, coordinating, and ensuring the implementation of actions to support NSA programs within specific regions like counties, sub-counties, or wards.
- **Nutrition-Sensitive Agriculture (NSA):** Agricultural practices and interventions designed to improve nutrition, ensuring the food produced is rich in essential nutrients, addressing malnutrition challenges.
- **Terms of References (TORs):** A document outlining the objectives, roles, responsibilities, and guidelines for a specific group or project, such as the activities of the TWGs and coordination teams.
- **County Agri-Nutrition Secretariat:** The central administrative body at the county level responsible for overseeing Agri-Nutrition programming, guiding and supporting local initiatives.

PREAMBLE

The County Agri-Nutrition Implementation Strategy (CANIS) for Busia County offers a clear guidance on strategic interventions at county and community levels for implementing nutrition-sensitive programs. This strategy aims to reduce malnutrition through efficient, inclusive, resilient, and sustainable agri-food systems. The main purpose of this strategy is to build, maintain and sustain linkages for sustained reductions in malnutrition levels through coordinated actions by state and non-state actors, and empowering communities for the production of adequate, safe, and nutritious foods. One of the sustainable approaches to food and nutrition security is through an integrated food systems approach that enhances the exploitation of end-to-end and farm-to-plate-methods. This strategy will be implemented by the Department of Smart Agriculture, Livestock, Fisheries, Agribusiness and Blue Economy in the County Government of Busia with assistance from other multisectoral government agencies.

To achieve its nutrition outcomes, this strategy has adopted the six focus areas from the Kenya Agri-Nutrition Implementation Strategy (ANIS) and has reformulated them as seven focus areas to suit the context of the county.

The six focus areas are:

1. Leadership, governance, coordination and advocacy;
2. strengthen service delivery systems and structures for provision of equitable and quality nutrition sensitive agriculture interventions;
3. Increase the availability, accessibility and consumption of safe, diverse and nutritious foods at all stages of the food chain;
4. Harness resource through public private initiatives to support nutrition sensitive agriculture interventions;
5. Community empowerment to engage in viable nutrition sensitive agriculture (NSA) initiatives;
6. Monitoring evaluation and knowledge management of agri nutrition interventions.

The CANIS sections covered in this strategy are introduction, contextual background, rationale for its development, policy alignment and guiding principles, focus areas for interventions, multi-sectoral approach to its implementation, monitoring and evaluation (M&E), and the costed implementation framework.

The development of the CANIS was spearheaded by the County Agri-Nutrition Unit in the Department of Smart Agriculture, Livestock, Fisheries, Blue economy and Agri Business with support from Implementing partners.

Section 1: Introduction



1.0: Introduction

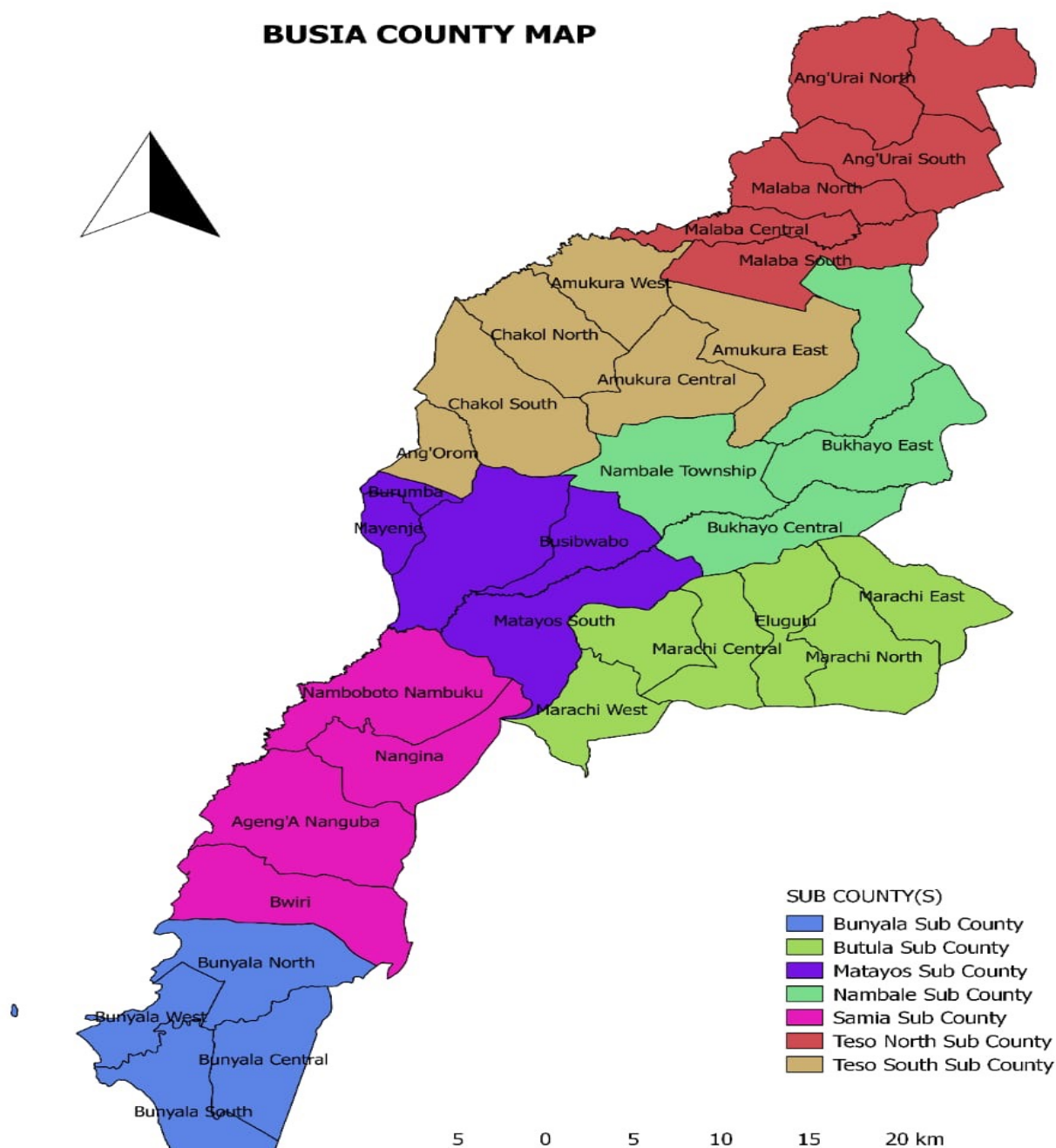
Busia County is in the former Western Province of Kenya. It shares its borders with Kakamega County to the east, Bungoma County to the north, Lake Victoria and Siaya County to the south, and Uganda to the west.

The County comprises of eight sub-counties: Matayos, Butula, Samia, Bunyala, Nambale, Teso-South, Teso Central and Teso-North with a population of 1,005,542, approximately 201,108 households, with an average family size of 5 (KNBS 2019) projections. Unfortunately, the poverty level in the region is high, standing at 83% (KDHS 2022), while the literacy rate is 75.3%. The male-to-female ratio is almost equal, with 48% male and 52% female. The age dependency ratio is 100:107, indicating a significant number of dependents. Nearly half of the population, around 47.1%, comprises children aged 0 to 14 years, and 26.4% are women of reproductive age. The remaining population is distributed as follows: under one year, 3.6%; under 17 years, 17.5%; and the adult population makes up 27.4%. Individuals aged 60 and over constitute 5.3% of the total population (KNBS, 2019) Busia County often reports yields of less than 1 ton per hectare compared to the national yield of about 1.6 tons per hectare due to poor farming practices and limited access to quality farm inputs.

Only about 30% of farmers in the county use improved seeds or fertilizers, compared to the national average of 50% (Department of Smart Agriculture, Livestock, Fisheries, Blue economy and Agribusiness, 2023). The county faces unreliable rainfall patterns of between 600-1,000 mm/annum with four agroecological zones namely, LM 1, LM 2, LM 3, LM 4, however there are frequent droughts, and occasional floods especially in Bunyala constituency, which have increased in frequency and intensity, severely affecting agricultural productivity. Erratic rainfall contributes to high soil erosion, and poor soil management has degraded approximately 60% of the county's soils.

Land fragmentation limits large-scale production and effective land management. Post-harvest losses are substantial, with up to 30% of crops lost due to inadequate storage, pests, and diseases (Department of Smart Agriculture, Livestock, Fisheries, Blue economy & Agribusiness, 2022). The expansion of cash crops like sugarcane has reduced land available for food crops, exacerbating food insecurity. High costs of farm inputs, such as fertilizers and pesticides, further strain farmers' budgets, with fertilizer costs rising over 20% in the past five years. Many farmers lack knowledge of modern farming techniques, with less than 40% having access to agricultural extension services. The county, however, has potential for irrigated agriculture because of the permanent rivers.

BUSIA COUNTY MAP



1.1 Overview of Food and Nutrition Security

Busia county is overburdened by the triple burden of malnutrition of undernutrition (stunting, wasting, underweight), micronutrient deficiencies (Vitamin A, Iron, Folic, Zinc). and overnutrition (overweight and obesity)(Busia CNAP 2018/2023). Beyond the immediate causes of malnutrition, there are underlying socio-cultural, political, and economic factors at play which include household food insecurity, inadequate care for vulnerable household members across different gender and age groups, and cultural norms and practices that influence perceptions on food acquisition, preparation, sharing, and consumption at community and household levels. According to KDHS 2022, the stunting underweight and wasting rates among the children below the age of five years was at 15%, 6.3% and 2.8% respectively.

The poor infant feeding practices being the major contributing factor to the poor nutrition status, with only 31% of children fed of minimum accepted diet. Anemia among pregnant women in Busia is a significant health concern, standing at 29.2% in 2022 among women attending antenatal clinics in Busia County (KHIS 2022)

Food diversity in the county is varied however, indigenous crops are perceived as food for the less privileged, leading many mothers to sell nutritious foods like African leafy vegetables, eggs, sweet potatoes, and cassava to buy less nutritious processed items such as mandazis, sodas, and chapatti (Nabwire, 2023). The production and consumption of traditional nutritious foods in the county have declined due to a shift in dietary preferences. Increasing food production among county residents and improving market availability and access to food play a pivotal role in promoting the consumption of nutritious and diversified foods.

1.2 Overview of Agriculture Situation

The county experiences favorable climate that allows two cropping seasons annually making agricultural the cornerstone of the county's economy, contributing a significant 58% to the Gross County Product and constituting 50% of primary income source at household level (CIDP, 2022). The county has vast arable land, with a remarkable 81% of its terrain well-suited for agricultural production. Nevertheless, the county faces the worrisome trend of declining agricultural land, paired with an average farm size of a mere 1.2 acres.

The county places a significant emphasis on crop production, with maize commanding a prominent position as the preferred food crop, accounting for 95% of the crop share. Other crops are beans (52%), cassava (39%), finger millet (31%), sorghum (24%), groundnuts (17.6%), and sweet potatoes (16.8%). Rice is also a cultivated crops and is concentrated in Bunyala Sub County, where irrigation practices enhance its growth (Department of Smart Agriculture, Livestock, Fisheries, Blue economy & Agribusiness, 2022)..

The food and nutrition insecurity is due to food shortage resulting from low food production and productivity exacerbated by land degradation, high cost of production, land fragmentation, inadequate implementation of land policies to protect agricultural land, climate change, food waste and food losses, unorganized marketing systems, lack of food reserves/silos and low agriculture enterprise diversification. Cultivation of cash crops like sugarcane hurts food and nutrition security at the county and household level (Department of Smart Agriculture, Livestock, Fisheries, blue economy and Agribusiness, 2022).

The county borders Lake Victoria that promotes blue economy activities. The directorate of fisheries and blue economy promotes various technologies that are geared towards increasing production and productivity of fish. This includes, cage farming, backyard ponds and land-based farming across the county.

The livestock sector plays an integral role in improving household incomes through keeping small stocks (poultry, goats-etc.) and cattle. The livestock directorate has developed strategies that are geared towards increasing production and productivity of livestock farming.

1.2.1 Extension Delivery Services

The ratio of extension workers to farmers in the county is at best 1:2,000 compared with the desired level of 1:400 (FAO, 2013) recommendation. This has constrained the delivery of extension services, with consequence of few farmers reached and low adoption of agricultural technologies and practices. However, the extension gap is bridged through public-private partnership engagement. The existence of an agricultural training center (ATC) promotes excellence in the adoption of agricultural technologies by farmers and stakeholders. The agricultural Mechanization services center provides agricultural mechanization (AMS), and KALRO Alupe provides agricultural in research. (Department of Smart Agriculture, Livestock, Fisheries, Blue economy and Agribusiness, 2023).

1.3 Rationale for Agri-Nutrition strategy

The Constitution of Kenya 2010, under Article 43(1), firmly establishes the right to food, affirming that every individual has the right to be free from hunger and to have access to adequate food of acceptable quality, including proper nutrition. Progress has been made through the Busia County Nutrition Action Plan (CNAP 2018 – 2023) domiciled in the Department of health that promotes multisectoral engagement and partnership. 53% of the set targets have been achieved, highlighting the necessity for intensified efforts towards nutrition-sensitive interventions. Despite various state and non-state programs supporting Agri-nutrition, such

as KeLCoP, ABDP, KADBP, NAVCDP, and NICE, there remain gaps in meeting county targets because of uncoordinated approaches and inadequate funding. Presently, Busia County lacks an Agri-nutrition policy and implementation framework, leading to minimal budget allocation for Agri-nutrition initiatives. Customization of, Kenya National Agriculture and Nutrition Investment Strategy (ANIS) local context of Busia is critical.

1.4 Goal and Strategic Objectives of CANIS

1.4.1 Goal

To contribute to the sustainable reduction of high malnutrition levels through coordinated Nutrition-Sensitive Agriculture (NSA) actions by state and non-state actors, and empower communities to produce and consume adequate, safe, diverse, and nutritious foods.

1.4.2 Strategic Objectives

- 1) To promote Leadership, governance, coordination, and advocacy for Agri-nutrition activities in the county.
- 2) To strengthen service delivery systems and structures for the provision of equitable and quality Nutrition Sensitive interventions.
- 3) To increase the availability, accessibility, and consumption of safe, diverse, and nutritious foods at all stages of the food chain.
- 4) To enhance stakeholder engagement of non-state actors, resource mobilization and investment strategies for improved food and nutrition security.
- 5) To build the capacities of communities to engage in the production and consumption of safe, diverse nutrient nutrient-dense food products.

To establish an effective monitoring and evaluation system to track and asses implementation and performance of NSA initiatives through all levels.

Section 2: Agri-nutrition Implementation Strategy Focus Areas



2.1 Focus area 1: Leadership, governance, coordination, and advocacy

The enabling environment for Nutrition Sensitive Agriculture (NSA) consists of commitments and capacities of county and sub-county actors through institutionalizing policies and legal frameworks, and mobilizing human and financial resources, partnerships, and linkages. Given the multi-causal effects of malnutrition, the engagement of a robust group of stakeholders at both county and subcounty levels is necessary.

Strategic objective 1: To promote Leadership and governance for Agri-nutrition activities in the county.

Strategic Action 1: *Improve the regulatory, legal, and policy environment for NSA interventions.*

Specific Activities

1. Sensitize the county executive and legislature on the regulatory and policy frameworks for NSA interventions.
2. Sensitize service providers on NSA policies and guidelines.
3. Domestication of policies and guidelines on NSA.
4. Develop policies and guidelines on NSA at the County level.

Strategic Action 2: *Support planning and coordination for NSA interventions at all levels.*

Specific Activities

1. Hold annual meetings with the planning department during the budget-making process.
2. Hold bi-annual meetings for the county executive committee for NSA interventions.
3. Hold quarterly meetings for county and sub-county Agri nutrition technical forums for NSA intervention.
4. Hold monthly meetings for the village food and nutrition committee for NSA interventions.

Strategic Action 3: *Enhance advocacy and resource mobilization for NSA activities*

Specific Activities

1. Develop Policy briefs and a facts sheet on NSA for decision-making.
2. Sensitize Civil society organizations on the NSA activities.
3. Sensitize the Media on the NSA activities
4. Hold annual advocacy meetings with the county executive, legislature, and non-state actors on resource allocation for NSA activities.

Strategic Outcome

1. Improved regulatory requirements and policy environment for Nutrition Sensitive Agriculture (NSA) programming across all levels of operation
2. Increased planning and resource allocation for the implementation of NSA at all levels of operation.
3. Strengthened advocacy and communication for NSA interventions at all levels of operation.

2.2 Focus Area 2: Strengthen Service Delivery Systems and Structures for Provision of Equitable and Quality Nutrition-Sensitive Agriculture Interventions

The focus area addresses the identified opportunities of coming up with nutrition sensitive agriculture intervention.

Strategic Objective 2: To strengthen service delivery systems and structures for the provision of equitable and quality Nutrition Sensitive interventions.

Strategic Action 1; *Increase efficient access to information on food systems for established digital Agri-nutrition through all levels.*

Specific Activities

1. Hold Radio Talk shows on Agri-nutrition .
2. Develop, translate and Disseminate IEC(Brochures, Flyers)materials on food systems
3. Establish Demonstration plots on Good Agronomic Practices of different value chain on Nutrition Sensitive Agriculture
4. Carry out field Days on NSA.
5. Sensitize policymakers, implementing officers, and the community to the Food Systems Dashboard.

Strategic Action 2: *Provide support to increase the capacity of service providers on Agri-nutrition for increased production of safe, diversified, and nutritious foods.*

Specific Activities

1. Conduct a training needs assessment on Agri-nutrition for the agriculture extension officers
2. Train agriculture extension officers on the identified skills gap on NSA.

Strategic Action 3: *Create fora at all levels to engage on Agri-nutrition interventions.*

Specific Activities

- Establish NSA engagement forums involving farmers at the ward level.

Strategic Outcomes

1. Increased access to information on NSA, food systems for policy makers, implementing officers, and the community
2. Increased capacity of agriculture extension workers and other service providers on Agri-nutrition and food systems for increased production of safe, diversified, and nutritious foods.
3. Skilled and competent public and private Agri-nutrition workforce and multisectoral technical working group (TWG) maintained to provide leadership support for nutrition-sensitive activities at all levels of operation.

2.3 Focus area 3: Increase the availability, accessibility, and consumption of safe, diverse, and nutritious foods at all stages of the food chain

This focus area has a keen interest in improving nutrition standards amongst the population by increasing access to and consumption of nutritious food through a food systems approach that focuses on actions to improve diversified food production, post-harvest management, processing, distribution, market retail, and consumption. To achieve this, it has adopted the following objectives.

Strategic Objective: Increase the availability, accessibility, and consumption of affordable, safe, diverse, and nutritious foods at all stages of the food chain.

Strategic Action 1: *Promote the provision of quality and quantity farm inputs for optimum diversified food production.*

Specific Activities

1. Sensitize and train farmers on seed systems, adoption of diverse and certified seeds and planting materials (indigenous, bio-fortified), and other new and appropriate technologies
2. Sensitize farmers on good agriculture practices (especially agronomic, soil fertility management practices, and integrated pest management technologies) through establishing farmer field schools.
3. Train farmers on the production of emerging livestock
4. Establish demonstrations on integrated backyard fishponds and cage farming.
5. Acquisition and distribution of subsidized quality and diversified farm inputs.
6. Train extension officers on efficient farm water and soil management for proper crop and livestock production.
7. On-farm training and demonstrations on efficient farm water and soil management for proper crop and livestock production.
8. Establish bulking sites for nutrient-dense crops in farmer field schools to ensure availability of clean planting materials

Strategic Action 2: *Promote increased consumption of safe, nutrient-dense, and diverse foods.*

Specific Activities

1. Train and demonstrate to farmer groups (including women, youth, and PLWDs) on meal planning and food preparation techniques/technologies for food and nutrient preservation.
2. Sensitize farmers to establish market linkages for the sale of the farm produce.
3. Train and capacity build agricultural extension officers, farmers, and the general community on the various food safety and quality control, and safe use of pesticides
4. Train the community on the consumption and utilization of indigenous and orphaned crops

Strategic Action 3: *Promote post-harvest handling, processing technologies, and food marketing systems to ensure access to safe, nutrient-dense, and diverse foods.*

Specific Activities

1. Train and demonstrate to farmer groups (including women and youth) on food and nutrient preservation techniques and Agro-processing technologies
2. Sensitize farmers on existing e-marketing platforms at the sub-county level.
3. Conduct demonstrations on appropriate household food storage structures and innovations for improved food and nutrition security.
4. Installation of a solar-powered fish cold storage facility.
5. Train various market actors (aggregators, transporters, Agro-processors, wholesalers, and retailers) on food products, quality, safety, storage, and nutritional value.

Strategic Outcomes

1. Improved quality and quantity of farm inputs provided for optimum diversified food production.
2. Increased production and consumption of safe, nutrient-dense, and diverse foods.
3. Strengthened and sustainable food harvesting, processing, preservation practices, storage techniques, and marketing systems

2.4 Focus Area 4: Harness Resources through Public-Private Initiatives to support Nutrition Sensitive Agricultural Interventions

In achieving sustainable NSA initiatives, there is a need to engage state and non-state actors who play a major role in the food value chain. This is achieved through capacity building, policy development, inputs provision, business development services, product innovation, ICT solutions, and provision of market information and marketing channels.

Strategic Objective: To enhance stakeholder engagement of non-state actors and resource mobilization and investment strategies for improved food and nutrition security.

Strategic Actions 1: *Enhance the participation of private sectors and other non-state actors in NSA initiatives through;*

Specific Activities

1. Annual mapping of all key players and understanding their roles in the sector
2. Conduct annual inception meetings to share the progress on NSA activities
3. Conduct quarterly meetings to share progress on NSA activities
4. Annual co-creation planning meetings between state and non-state actors

Strategic Action 2: *Enhance capacity, resource mobilization, and investments by private and non-state actors in the implementation of efficient NSA interventions through;*

Specific Activities

1. Sensitization of private and non-state actors, including women, youths, and People living with disabilities (vulnerable groups) on NSA and its importance
2. Joint proposal development for support of NSA initiatives
3. Developing and signing of Memorandum of Understanding with partners clearly outlining NSA Interventions to be supported by Partners and matching funds provisions where necessary.

Strategic Actions 3; *Enhance access to safe, diverse, and nutrient-dense foods through appropriate private sector-led business development services such as logistics, financing, contract farming, and digital platforms through;*

Specific Activities

1. Sensitization of community groups on diversification and utilization of safe and nutrient-dense foods
2. Development of financial products in collaboration with financial institutions
3. Link farmers and off-takers to financial institutions offering financial products
4. Facilitate market access through the promotion of contract farming
5. Use of existing audio, visual, and digital platforms in the promotion of NSA.

Strategic Outcome

1. Private sector and other non-state actors mobilized and engaged to deliver efficient and cost-effective NSA initiatives, research, and knowledge management for promotion of safe and diverse foods.
2. Increased capacity, resource mobilization, and investments by private sector and non-state actors in the implementation of efficient NSA interventions.
3. Increased NSA Private sector led business development services for efficient delivery and promotion of NSA services.

2.5 Focus Area 5: Community Empowerment to Engage in Viable Nutrition Sensitive Agriculture (NSA) Initiatives

The aim is to increase the capacity of the local community to sustainably manage and use the available resources to enhance food production, consumption, value addition, marketing of nutrient-rich foods and non-conventional foods.

Strategic Objectives: To build the capacity of communities to engage in the production and consumption of safe, diverse, and nutrient-dense food products

Strategic Actions 1: *Establish, Strengthen, and Operationalize Community-Based Farm Assistants (CBFAs) as a community-level structure for NSA interventions*

Specific Activities:

1. Recruit the CBFs in each ward
2. Train TOTs of CBFAs on NSA interventions.
3. Train the CBFAs on NSA interventions
4. Develop and demonstrate CBFAs guidelines

Strategic Actions 2: *Support CBFAs to build the capacity of local communities on NSAs*

Specific Activities:

1. Conduct monthly community dialogue days on Agri-nutrition for the CBFAs
2. Sensitize community groups on NSA (Women, youth, and PWD)
3. Conduct monthly farm household visits by CBFAs
4. Conduct Quarterly field demonstrations on NSA interventions
5. Conduct an annual field day per ward

Strategic Actions 3: *Promote linkages to financial and insurance services for community-based organisations*

Specific Activities:

1. Map the CBOs and the service providers
2. Train farmers on Agri-financing.

Strategic Actions 4: *Promote social accountability through community advocacy and outreach.*

Specific Activities:

1. Conduct sensitization of farmers and service providers on gender and disability mainstreaming in agriculture
2. Conduct community outreach on social accountability in Agri-nutrition.

Strategic outcome

1. Community-Based Farm Assistants (CBFAs) established and operationalized
2. Enhanced community Capacity on Nutrition-Sensitive Agriculture
3. Increased Access to Financial and Insurance Services
4. Improved Social Accountability and Advocacy

2.6 Focus Area 6: Monitoring, Evaluation, and Knowledge management of Agri-Nutrition interventions

This focus area aims to establish mechanisms for the collection and analysis of Agri-nutrition data across all key indicators that align with the CANIS focus areas. These mechanisms will

play a role in fostering active engagement of stakeholders, ensuring planning, effective implementation, and the timely reporting of progress toward the realization of CANIS overarching goal. The development of objectively verifiable indicators and performance targets will be guided by a unified results framework integrated into the implementation matrix. A comprehensive set of performance indicators has been outlined for each of the five focus areas.

Strategic Objective: To build an effective monitoring and evaluation system at all levels

Strategic Action 1: *Develop Monitoring and Evaluation System for NSA Interventions*

Specific Activities:

1. Integrate NSA indicators into the existing M&E System
2. Develop Agri-Nutrition Indicators Handbook
3. Conduct Baseline, midline and endline survey on NSA Indicators
4. Develop NSA Data Reporting Tools
5. Sensitize Implementation Teams on NSA Tools and Indicator Handbook
6. Conduct Quarterly Data Review Meetings on NSA activities, Indicators, Programs/ Projects.

Strategic Action 2: *Promote NSA Knowledge Management at All Levels of Operation*

Specific Activities:

1. Hold quarterly stakeholders feedback and review meetings
2. Annual documentary and dissemination of NSA best practices and lessons learned
3. Monthly updates of NSA information in the food systems dashboard
4. Update the county websites, agriculture platform to function as NSA knowledge repository

Strategic Action 3: *Upscale research agenda to inform policy and provide evidence for programming and improving practice*

Specific Activities

1. Annual dissemination of the research findings.

Strategic Outcome

2. Enhanced accountability and performance of NSA interventions through a systematic monitoring and evaluation framework.
3. Improved dissemination and utilization of NSA knowledge and best practices across all levels of operation.
4. Informed and evidence-based NSA policies and programming, driven by a strengthened research agenda that continuously provides actionable insights.

Section 3: Multi-sectoral collaboration and implementation structure for Agri-nutrition programming



3.1 Governance structure Malnutrition is influenced by a multitude of factors that require a range of actions, including adequate dietary intake, promoting proper maternal and child nutrition, preventing diseases, creating a healthy household environment, implementing appropriate care and feeding practices, and enhancing household food and nutrition security (UNICEF 2020). Mainstreaming nutrition-sensitive agriculture across line departments at the county level is critical to:

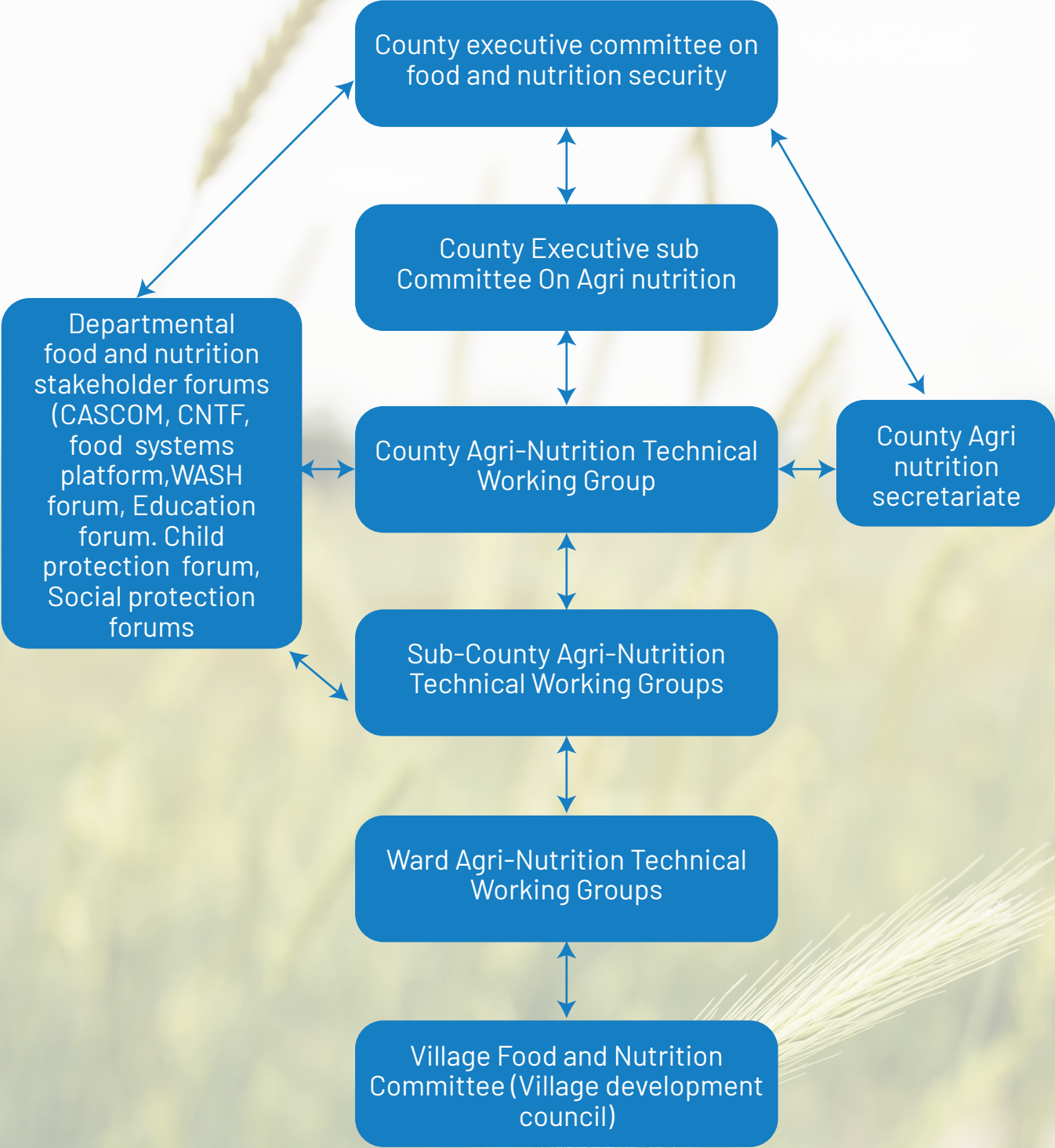
- Identify and understand the health issues related to malnutrition in the county
- Understand the specific nutrients contributing to the current and emerging health and nutrition issues.

Leverage technical expertise that identifies agricultural enterprises/commodities rich in the target nutrients, as referenced in national dietary guidelines.

The establishment of an Agrinutrition governance and coordination structure with the capacity to strengthen linkages across various sectors will augment the realization of the set objectives. The coordination structure will encompass a wide array of actors, including health, agriculture, water and irrigation, trade and industry, education, social protection, county and national administration, community-based organizations (CBOs), faith-based organizations (FBOs), quality assurance and standards organizations, civil society organizations, community partners, and development partners.

The primary goal of the coordination structure is to ensure an all-inclusive engagement by all actors engaged in nutrition-sensitive agriculture activities through joint work planning and implementation. This collaborative approach promotes synergies among interventions and reduces /mitigates duplication of activities.

Agri Nutrition Governance and Coordination Structure



Agri Nutrition Governance and Coordination Structure

The coordination of Agri nutrition interventions and activities will be conducted across of levels of service delivery and finally culminates at the county executive committee on food and nutrition security, which has a supra decision-making mandate on matters of food and nutrition security in the county. The committees and their roles are outlined below:

1. County executive committee on food and nutrition security
2. County Executive Sub-Committee on Agri-Nutrition
3. County Agri-Nutrition Secretariat
4. County Agri-Nutrition Technical Working Group
5. Sub-County Agri-Nutrition Technical Working Group
6. Ward Agri-Nutrition Technical Working Group
7. Village Agri-Nutrition Committee (Village development council)

3.1.2 County executive committee on food and nutrition security

The county executive committee members' meeting will be chaired by the governor or his appointee with the county secretary as the secretary. Other members including ex official members are as outlined in the MSP for food and nutrition terms of reference.

- The committee will provide for high level decision making regarding food and nutrition security with a specific focus to Agri nutrition.
- Enhance coordination and complementarity of sector-specific efforts, preventing duplication and promoting synergy.

3.1.3 County Executive sub-Committee on Agri nutrition Agri nutrition

The county executive members subcommittee on Agri nutrition shall be a subcommittee formed from the CECM group consisting of CECMs that are relevant to the Agri nutrition output. Their key functions will include

- Provide Policy direction, guidance and oversight to implementing agencies on agri nutrition
- Direct commitment of county resources for effective implementation of the Agri nutrition strategy, guidelines and action plans
- Ensure mainstreaming of county Agri nutrition interventions in county planning documents
- Recommend for approval Agri nutrition strategy, guidelines and action plans policies and strategy documents to the county executive committee members meeting on food and nutrition security
- Facilitate resource mobilization, allocation, supervision, and guidance for the Agri nutrition strategy, guidelines, and action plans implementation.

3.1.4. Departmental food and nutrition stakeholder forums

The Agrinutrition governance and coordination committees will link with the already exist food and nutrition stakeholder platforms, forums and technical committees within the line departments for efficiency and effective implementation devoid of duplication of interventions. The platforms include and not limited to food systems platform, county agriculture sector steering committee, county nutrition technical forum (CNTF), water hygiene and sanitation (WASH) forum, Education forum. Child protection forum and social protection forums.

Their operations will be guided by the already existing terms of references

3.1.5 County Agri-Nutrition Secretariat (CAN-SEC)

The Agri-Nutrition Secretariat will be responsible for Agri-Nutrition programming with a designated lead officer from the Department of Smart Agriculture who will be responsible for:

- Leading and supporting capacity-building and coordination efforts for Nutrition-Sensitive interventions.
- Convene a County Agri-Nutrition secretariat meeting on a quarterly basis and link with the oversight authority and the county technical working group
- Collaborate with the National Technical Working Group (TWG) and Secretariat.

3.1.6 County Agri-Nutrition Technical Working Group

The multi-sectoral team is comprised of both state (Departments of; Smart Agriculture, Livestock, Fisheries, Blue Economy and Agribusiness, Health Services & Sanitation, Education & Industrial Skills Development, Water, Environment, Irrigation & Natural Resources, Sports Culture & Social Services) and non-state actors involved in NSA within the county. The main role of the CTWG will be to provide technical guidance on planning, coordination, and implementation of Agri nutrition interventions in the county.

3.1.7 Sub-County Agri-Nutrition Technical Working Group

The sub-county's multi-sectoral team comprises both state and non-state actors involved in NSA initiatives. The chairperson of this team will be the Sub-County Agricultural Officer, or an officer appointed by the Crops Directorate. Other officers nominated by various directorates of agriculture, including livestock, veterinary, and fisheries, may serve as either the co-chair or secretary. The main role of the Sub County technical working group will be to provide technical guidance on planning, coordination, and implementation of Agri nutrition interventions at the sub county level and linkage with relevant food and nutrition stakeholder forums at the sub county level.

3.1.8 Ward Agri-Nutrition Technical Working Group

The ward-county's multi-sectoral team comprises both state and non-state actors involved in NSA initiatives. The chairperson of this team will be the ward Agricultural Officer, or an officer appointed by the Crops Directorate. Other officers nominated by various directorates of agriculture, including livestock, veterinary, and fisheries, may serve as either the co-chair or secretary. The main role of the Ward County technical working group will be to provide technical guidance on planning, coordination and implementation of Agri nutrition interventions at the Ward County level and linkage with relevant food and nutrition stakeholder forums at the Ward County level.

3.1.9 Village Agri-Nutrition Committee (Village development council)

This committee will bring together relevant actors at the village level, The committee will be chaired by the village administrator. The secretary of this team will be the village lead farmer. The primary responsibility of this committee will include.

- Implementation of actions aimed at supporting NSA programs within the village unit
- Establish connections with the Ward Food and Nutrition Committee to foster collaboration and coordination in addressing nutritional issues at the local ward level

3.2 Monitoring and evaluation of CANIS

The County M&E Unit shall coordinate M&E activities to monitor the CANIS. The line sectors shall regularly share their quarterly progress reports to the County M&E Unit, with leadership

role from the agriculture departmental M&E unit. The Sub County M&E Teams will be responsible for preparing monthly reports and submitting them to the county M&E Unit. This will then be aggregated and submitted to CAN-SEC for synthesis and submission to the Agri Nutrition CECM subcommittee for action.

3.2.1Monitoring process

The monitoring process involves the following components:

- Data Generation,
- Data Validation
- Data Analysis
- Information Dissemination
- Stakeholder Collaboration

3.2.2 Agri-nutrition data flow

3.2.3 Evaluation of the CANIS

The evaluation of CANIS is intended to assess whether the results achieved can be attributed to the implementation of CANIS by all stakeholders. A baseline, midterm, and endterm evaluation assessment will be done. Effective evaluation of the CANIS will focus on relevance, effectiveness, and sustainability by answering the following questions:

1. Have the resources been effectively allocated and used to realize the Agri-nutrition strategic outcomes
2. To what extent of certainty are Agri nutrition interventions contributing to the decline of all forms of malnutrition in the county?
3. To what extent has the multi-sectoral and multidisciplinary approach contributed towards the perceived change in food and nutrition status?
4. How well has CANIS performed in achieving its stated goals and outcomes? Are the intended results being realized?
5. What is the likelihood that the positive outcomes and impacts of CANIS can be sustained?

3.3 Potential Risks and Mitigation Measures

The County Agri-Nutrition interventions operate in a complex, multi-sectoral environment, requiring robust coordination and effective implementation strategies to achieve their objectives. The diverse actors involved pose several potential risks that could impede implementation success.

Table: Agri-Nutrition Program Risk and Mitigation Matrix

Risk Category	Potential Risk	Impact	Likelihood	Mitigation Strategy	Responsible Entity
Coordination	Inadequate collaboration among multi-sectoral teams (state and non-state actors)	High	Moderate	Develop and implement Terms of Reference (TORs) for all levels.	County Agri-Nutrition Secretariat (CAN-SEC)

Data Management	Inconsistent data collection and reporting from various sectors	High	Moderate	<ul style="list-style-type: none"> - Standardize data collection tools and processes. - Provide training on data management and reporting guidelines. - Implement routine data quality assessments and validation checks. 	County M&E Unit,
Funding Allocation	Inadequate financial resources to implement NSA programs	High	High	<ul style="list-style-type: none"> - Advocate for increased budget allocations for agri-nutrition interventions. - Leverage partnerships with non-state actors for additional resources. - Prioritize resource allocation based on program needs and impact potential. 	County Director for Agriculture, Sub-County Agricultural Officers
Human Resource Capacity	Insufficient human resource capacity for implementing NSA activities	Medium	Moderate	<ul style="list-style-type: none"> - Advocate for the recruitment of more HR - Recruit and allocate an adequate number of skilled staff to implement NSA activities 	County Director for Agriculture, Sub-County Agricultural Officers
Technical capacity	Insufficient technical capacity among staff to implement NSA initiatives	Medium		<ul style="list-style-type: none"> - Conduct regular capacity-building workshops and training programs. - Collaborate with research institutions for specialized training. - Monitor staff performance and provide additional support where needed. 	County Agri-Nutrition Secretariat, Ward and Sub-County TWGs
Policy and Regulatory Environment	Changes in policy or regulatory environment impacting NSA programs	Medium	Moderate	<ul style="list-style-type: none"> - Engage with policy-makers to align NSA initiatives with current regulations. - Establish a policy review committee within the County Agri-Nutrition Secretariat. - Monitor and adapt to policy changes promptly. 	County Agri-Nutrition Secretariat, County Director for Agriculture

Political landscape	Shifts in the political landscape	Medium	Moderate	<ul style="list-style-type: none"> - Development and domestication of Agri-nutrition policies - Advocacy among the executives and the legislative arm of the county Engaging the civil society organisation for advocacy 	CEC department of agriculture
External Factors	Natural and man-made calamities and disasters	Medium	Moderate	<ul style="list-style-type: none"> - Develop contingency plans for disaster response. - Incorporate risk reduction strategies in program design. - Build partnerships with disaster management agencies. 	County Agri-Nutrition Secretariat, County Director for Agriculture

Section 4: Agri-Nutrition Implementation Plan



This implementation plan Tabulates the, strategic objectives and strategic outcomes for all the six focus areas of the implementation strategy and the persons, agencies and institutions/ sectors responsible for the implementation of the NSA interventions.

The budget estimates for all activities under the objectives outlined in the six focus areas for the five years (2024-2029) total to **Ksh. 562,671,200.**

Financing the proposed budget will be a joint effort between the National Government, County Government of Busia, Development Partners, Civil Society Organizations, Private Sector and other stakeholders. However, the County Government of Busia in collaboration with national Government and development partners shall mobilize resources to ensure this strategy is implemented.

The implementation matrix further provides the baseline indicator and targets for each financial year for the five years of implementation, which will form a basis for mid-term and end-term evaluation of strategy implementation

Appendices

Appendix 1: List of contributors

BUSIA COUNTY CANIS VALIDATION PARTICIPANTS		
S/NO	NAME	ORGANIZATION
1	Samson Khachina	CGB- Director Agriculture
2	Frank Moturi	CGB- Agriculture
3	Scholastic Nabade	CGB-Health CNC
4	Marygorret Aluku	CGB- Agriculture
5	Faiza Barasa	CGB-Health M&E
6	Chrispinus Mwafula	CGB-Finance
7	Claudia Wakhu	CGB- Health PHO
8	Richard Elungat	CGB- Agribusiness
9	Jackline Ongeso	CGB-SCAO Butula
10	Joyce Nabwire	CGB-Health Nutritionist
11	Judith Agembo	CGB-Health Nutritionist
12	Moses Omongaise	Youth farmer
13	Euphemy Aoko	Farmers Hub
14	Jacinta Osiema	CGB-SCAO Bunyala
15	Radoli Shiundu	CGB-Coordinator KeLCoP
16	Jacinta Mwandala	Farmers Hub
17	Flevian Ouyo	CGB-Health Nutritionist
18	Mary Mamati	CGB-SCAO Butula
19	Ann Sifuna	CGB-Education
20	Patrick Makio	CGB- Water and Irrigation
21	Jacinta Nangila	CGB-Fisheries
22	Meriline Barasa	CGB-Health Nutritionist
23	Taabu Mafimbo	NGAO
24	Pauline Kona	CGB- Livestock
25	Adelide Akotsi	CGB-Health Nutritionist
26	David Kioko	Network manager
27	Judeline Mbalwe	CGB-Health Nutritionist
28	Maurice Khamala	CGB-Agriculture Livestock
29	Juliet Nduta	Nutrition International
30	Jonathan Amolo	CGB-Water
31	Nancy Lopadis	Social Services

32	Agnes Oningo	CGB- Agriculture
33	Rev. Oscar Ekesa	Busia Food Systems Chairperson
34	Dr. Dennis Odhiambo	CGB- Agriculture Delivery Unit
35	Prof. Silvenus O. Konyole	
36	Dr. Florence Nabwire	Cambridge University
37	Baraka Some	Ministry of Agriculture
38	Daniel Nyauke	NICE Project Coordinator
39	Elizabeth Imbo	NICE Project Manager
40	Susan Ambajo	NICE Project Nutrition Assistant
40	Francis Osiro	SHA- Coordinator Busia
41	Margaret Matseshe	SHA-Nutrition

Appendices

Appendix 2: Agri-Nutrition Implementation Plan

Agri-Nutrition Implementation Plan															
FOCUS AREA 1: LEADERSHIP, GOVERNANCE, COORDINATION AND ADVOCACY															
Strategic Objective: To promote Leadership and governance for Agri-nutrition activities in the county.															
Strategic Action	Activities	Outputs	Output Indicator	Baseline	Timelines and Targets					Timelines and Budget					Lead Partner Other Partner(s)
					2024/2025	2025/2026	2026/2027	2027/2028	2028/2029	2024/2025	2025/2026	26/27	2027/2028	2028/2029	
SA 1. Improve the regulatory, legal, and policy environment for NSA interventions. nations	Sensitize county executive and legislature on the regulatory and policy frameworks for NSA interventions.	County executives and legislature sensitized the regulatory and policy frameworks for NSA interventions.	Number of County executives and legislature sensitized on the regulatory and policy frameworks for NSA interventions	0	45						1204000				CGB
	Sensitize service providers on NSA policies and guidelines.	Service providers Sensitized on NSA policies and guidelines.	Service providers Sensitized on NSA policies and guidelines.	0	35	35	35	35	35	205500	205500	205500	205500	205500	CGB
	Domestication of policies and guidelines on NSA	Policies and guidelines on NSA domesticated	Number of Policies and guidelines sensitized on NSA domesticated	0	1	1	1	1	1	664000	664000	664000	664000	664000	CGB
	Develop policies and guidelines on NSA at the County level.	Policies and guidelines on NSA developed at the County level.	Number Policies and guidelines developed on NSA developed at the County level.	0			1						7000000		CGB

SA 2: Support planning and coordination for NSA interventions at all levels.	Hold annual meetings with the planning department during the budget-making process.	Annual meetings held with the planning department during the budget-making process.	Number of annual meetings held with the planning department during the budget-making process.	0	1	1	1	1	1	1	1	157500	157500	157500	157500	157500	CGB
	Hold bi-annual meetings for the county executive committee for NSA interventions.	Bi-annual meetings held for the county executive committee for NSA interventions.	Number of bi-annual meetings for the county executive committee for NSA interventions held	0	2	2	2	2	2	2	2	700000	700000	700000	700000	700000	CGB
	Hold quarterly meetings for county and sub-county Agri nutrition technical forums for NSA intervention.	Quarterly meetings held for county and sub-county Agri nutrition technical forums for NSA intervention	Number of Quarterly meetings for county and sub-county Agri nutrition technical forums for NSA interventions held.	0	36	36	36	36	36	36	36	1590000	1590000	1590000	1590000	1590000	CGB
	Hold monthly meetings for the village food and nutrition committee interventions.	monthly meetings held for the village food and nutrition committee for NSA interventions.	Number of monthly meetings for the village food and nutrition committee for NSA interventions held.	0	420	420	420	420	420	420	420	-	-	-	-	-	CGB
SA 3: Enhance advocacy and resource mobilization for NSA activities	Develop Policy briefs and fact sheets on NSA for decision-making.	Policy briefs and fact sheets developed on NSA for decision making.	Number of Policy briefs and fact sheets developed on NSA for decision-making developed.	0	1	1	1	1	1	1	1	25000	25000	25000	25000	25000	CGB
	Sensitize Civil society organizations on the NSA activities.	Civil society organizations sensitized on the NSA activities.	Number of Civil society organizations sensitized.	0	30	30	30	30	30	30	30	135000	135000	135000	135000	135000	CGB
	Sensitize the Media on the NSA activities	Media sensitized on the NSA activities	Number of Media on the NSA activities sensitized	0	35	35	35	35	35	35	35	157500	157500	157500	157500	157500	CGB
	Hold annual advocacy meetings with the county executive, legislature and non-state actors on resource allocation for NSA activities.	Annual advocacy meetings held with the county executive, legislature, and non-state actors on resource allocation for NSA activities.	Number of annual advocacy meetings with the county executive, legislature, and non-state actors on resource allocation for NSA activities held.	0	40	40	40	40	40	40	40	400000	400000	400000	400000	400000	CGB

SUBTOTALS											5,238,500	4,034,500	11,034,500	4,034,500	4,034,500	
FOCUS AREA 2: STRENGTHEN SERVICE DELIVERY SYSTEMS AND STRUCTURES FOR PROVISION OF EQUITABLE AND QUALITY NUTRITION SENSITIVE AGRICULTURE INTERVENTIONS																
Strategic Objective 2: To strengthen service delivery systems and structures for the provision of equitable and quality Nutrition Sensitive interventions.																
<div>SA 1: Increase efficient access to information for established on food systems digital Agri-nutrition through all levels.</div>	Hold Radio Talk shows on Agri- nutrition	Radio Talk shows held on Agri- nutrition	Number of Radio Talk shows on Agri-nutrition held	0	4	4	4	4	4	4	120000	120000	120000	120000	C6B	
	Develop, translate, and disseminate IEC(Brochures, Flyers)materials on NSA	IEC(Brochures, Flyers) materials developed, translated, and disseminated on NSA	Number of IEC(Brochures, Flyers) materials on NSA Developed, translated, and disseminated	0						2,000				100000		
	Establish Demonstration plots on Good Agronomic Practices of different value chains in Nutrition Sensitive Agriculture	Demonstration plots on Good Agronomic Practices of different value chains established on Nutrition Sensitive Agriculture	Number of Demonstration plots on Good Agronomic Practices or different value chains on Nutrition Sensitive Agriculture established	0	70	70	70	70	70	70	70000	70000	70000	70000		C6B
	Carry out field Days on NSA.	Field Days on NSA carried out.	Number of field Days on NSA carried out.	0	8	8	8	8	8	8	800000	800000	800000	800000		C6B
	Sensitize policymakers and implementing officers, on Food systems dashboard.	policymakers and implementing officers, sensitized on Food systems dashboard.	Number of policymakers and implementing officers, on Food systems dashboard sensitized.	0	60	60	60	60	60	60	315000	315000	315000	315000		C6B
	Conduct training needs assessment on Agri- nutrition for the agriculture extension officers	Training needs assessment conducted on Agri-nutrition for the agriculture extension officers	Number of training needs assessments on Agri-nutrition for the agriculture extension officers conducted	0	1	1	1	1	1	1	20000	20000	20000	20000		C6B
<div>SA2: Provide support to increase the capacity of service providers on Agri-nutrition for increased production of safe, diversified, and nutritious foods.</div>	Train agriculture extension officers on the identified skills gap on NSA.	Agriculture extension officers trained on the identified skills gap on NSA.	Number of agriculture extension officers identified skills gap on NSA trained.	0	30	30	30	30	30	30	405000	405000	405000	405000		C6B

NSA 3: Create fora at all levels to engage on NSA interventions.	Establish NSA forums involving farmers at the ward level.	NSA engagement forums involving farmers at the ward level established.	Number of NSA engagement forums involving farmers at the ward level established.	0	35	35	35	35	35	35	-	-	-	-	-	CGB
	SUBTOTALS										1,730,000	1,830,000	1,730,000	1,730,000	1,730,000	CGB
FOCUS AREA 3: INCREASE THE AVAILABILITY, ACCESSIBILITY, AND CONSUMPTION OF SAFE, DIVERSE, AND NUTRITIOUS FOODS AT ALL STAGES OF THE FOOD CHAIN																
Strategic Objective: To increase availability, accessibility, and consumption of affordable, safe, diverse, and nutritious foods at all stages of the food chain.																
NSA 1: Promote the provision of quality and quantity of farm inputs for optimum diversified food production	Sensitize and train farmers on seed systems, adoption of diverse and certified seeds and planting materials (Indigenous, Bio-fortified)	Farmers trained on the use of diverse, certified/clean seeds and planting materials promoted	Number of Farmers trained on the use of diverse, certified/clean planting materials promoted	0	5250	5250	4900	4700	4550	5670000	5670000	4900000	47000000	4550000		CGB-MOA AND OTHERS
	Sensitize and train farmers on good agriculture practices through establishing farmer field schools	Sensitization done on good agriculture practices	Number of sensitizations done on good agricultural practices	0	5250	5250	4900	4700	4550	5670000	5670000	4900000	4700000	4550000		CGB-MOA and other line partners
	Sensitize and train farmers on livestock production and management with a focus on emerging livestock	Sensitizing and training farmers on livestock production and management	Number of sensitizations and training of farmers on livestock production and management	0	5250	5250	4900	4700	4550	5670000	5670000	4900000	4700000	4550000		CGB-MOA and other line partners
	Capacity building extension officers on efficient farm water and soil management for crop and livestock production	Capacity building extension officers on efficient farm water and soil management	Number of extension officers trained on efficient farm water and soil management	0	100	464000	100	464000	100	464000	100	464000	100	464000		CGB-MOA and other line partners
	On farm trainings and demonstration for farmers on efficient farm water and soil management for crop and livestock production	On farm training and demonstration for farmers on efficient farm water and soil management	Number of on farm training and demonstration for farmers on efficient farm water and soil management	0	5250	5250	4900	4700	4550	5670000	5670000	4900000	4700000	4550000		CGB-MOA and other line partners

	Establishing bulking sites for nutrient-dense crops in farmer field schools to ensure availability of clean planting materials	Establishing bulking sites for nutrient-dense crops in farmer field schools	Number of bulking sites established for nutrient-dense crops in farmer field schools	0	105	105	105	105	105	105	3150000	3150000	3150000	3150000	3150000	CGBMOE and other line partners
	Acquisition and distribution of subsidized quality and diversified farm inputs for crops livestock and fisheries	subsidized quality and diversified farm inputs for crop, livestock and fisheries acquired and distributed.	Number of subsidized quality and diversified farm inputs for crop, livestock and fisheries acquired and distributed.		5250	5250	5250	5250			9600000	9600000				CGBMOE and other line partners
	Train farmers and extension officers on efficient farm water management for proper crop and livestock production	Train farmers and extension officers on efficient farm water management for proper crop and livestock production	No of farmers trainings and number of farmers done on efficient farm water management for proper crop and livestock production	0	5250	5250	4900	4700	4550	5670000	5670000	4900000	4700000	4,550,000		CGBMOE and other line partners
	Sensitize farmers on seed systems and establish bulking sites for nutrient-dense crops	Sensitize farmers on seed systems and establish bulking sites for nutrient-dense crops	No of farmers sensitized on seed systems and number of sites established for bulking sites for nutrient-dense crops	0	5250	5250	4900	4700	4550	5670000	5670000	4900000	4700000	4550000		CGBMOE and other line partners
	Sensitize farmers on the adoption of new and appropriate farming technologies	Sensitize farmers on the adoption of new and appropriate farming technologies	No of farmers sensitized on adoption of new and appropriate farming technologies	0	5250	5250	4900	4700	4550	5670000	5670000	4900000	4700000	4550000		CGBMOE and other line partners
	Train farmers on integrated backyard fishponds and cage farming	Farmers trained on integrated backyard fishponds and cage farming	Number of farmers trained on integrated backyard fishponds and cage farming	0	2000	2000	2000	2000	2000	2420000	2420000	2420000	2420000	2420000		CGBMOA and other line partners
	Establish demonstration sites on integrated backyard fishponds and cage farming technologies.	Integrated demonstration sites on backyard fishponds and cage farms established	Number of Integrated demonstration sites on backyard fishponds and cage farms established	0		90	90				9750000	9500000				CGBMOA and other line partners

SA 2. Promote increased consumption of safe, nutrient-dense, and diverse foods	Train and demonstrate the community (including women, youth, and PLWDs) on meal planning and food preparation techniques/ technologies for food and nutrient preservation.	People (including women, youth, and PLWDs) sensitized	Number of people (including women, youth, and PLWDs) trained	0	5250		5250		4900	4700	4550	5870000	5670000	4900000	4700000	4550000	CGBMOA and other line partners
	Train and demonstrate to the community (including women, youth, and PLWDs) on food safety and quality control	People (including women, youth, and PLWDs) sensitized	Number of people (including women, youth, and PLWDs) sensitized	0	7000	7000	7000	7000	7000	7000	7000	4130000	4130000	4130000	4130000	4130000	CGBMOA and other line partners
	Sensitize the community on the consumption and utilization of indigenous and orphaned crops	People (women, youth, and PLWDs) sensitized	Number of people (women, youth, and PLWDs) sensitized	0	7000	7000	7000	7000	7000	7000	7000	4130000	4130000	4130000	4130000	4130000	CGBMOA and other line partners
SA 3. Promote post-harvest handling, processing technologies, and food marketing systems to ensure access to safe, nutrient-dense, and diverse foods.	Train and demonstrate to farmer groups (including women and youth) on agro-processing and value addition technologies	Farmer groups trained and demonstrated on agro-processing and value addition technologies	Number of Farmer groups trained and demonstrated on agro-processing and value addition technologies	0	105		105		105		105	3570000	3570000	3570000		3570000	CGBMOA and other line partners
		Demonstrations held	Number of Demonstrations held	0	105		105		105			2310000		2310000			CGBMOE and other line partners
	Sensitize actors on existing e-marketing platforms and establish market linkages at the sub-county level	Actors sensitized on e-marketing platforms and market linkage established	Number of actors sensitized on e-marketing platforms and market linkage established	0	700		700		700		700	410000	410000	410000		410000	CGBMOA and other line partners
	Conduct demonstrations on appropriate household food storage structures and innovations for improved food and nutrition security.	Demonstrations on appropriate household food storage structures and innovations for improved food and nutrition security conducted.	Number of Demonstrations on appropriate household food storage structures and innovations for improved food and nutrition security conducted.	0	70		70		70			2520000	2520000	2520000			CGBMOA and other line partners
	Installation of solar powered fish cold storage facility in markets	Solar powered fish cold storage facility installed in markets	Number of Solar powered fish cold storage facility installed in markets	0	1		1		1			1500000	1500000	1500000			CGBMOA and other line partners

	Conduct annual agricultural trade fairs and exhibitions for farmers and private sectors to showcase the different produce from across the county	Agricultural trade fairs and exhibitions for farmers and private sector conducted	Number of Agricultural trade fairs and exhibitions for farmers and private sector conducted	0	1	1	1	1	1	1	1	1	1685000	1685000	1685000	1685000	1685000	1685000	CGBMDA, MOH, and other line partners
SUB TOTALS													79,749,000	78,625,100	84,589,000	46,730,100	56,359,000		
FOCUS AREA 4: HARNESS RESOURCES THROUGH PUBLIC-PRIVATE INITIATIVES TO SUPPORT NUTRITION SENSITIVE AGRICULTURAL INTERVENTIONS																			
Strategic Objective: To enhance stakeholder engagement of non-state actors and resource mobilization and investment strategies for improved food and nutrition security																			
SI 1: Enhance the participation of non-state actors in NSA initiatives	Mapping and analysis of non-state actors engaged to deliver efficient and cost-effective NSA initiatives, research, and participation in NSA.	Non-state actors mobilized and engaged to deliver efficient and cost-effective NSA initiatives, research, and knowledge management for the promotion of safe and diverse foods	Number of Non-state actors mapped and analyzed in the NSA initiative	0	1	1	1	1	1	1	1	1	50000	50000	50000	50000	50000	50000	CGB, CGBMOE, and other line partners
	Conduct annual inception (for new entrants) and review meetings for non-state actors in NSA at the county level.	Annual inception and review meetings of non-state actors held	Number of inception and review meetings that non-state actors held	0	1	1	1	1	1	1	1	1	217000	217000	217000	217000	217000	217000	CGB, CGB, MOE, and other line partners
	Conduct annual co-creation planning meetings for the implementation of NSA initiatives	Annual co-creation planning meetings for the development and implementation of NSA initiatives are held	No of annual co-creation planning meetings held and no of joint workplans developed	0	1	1	1	1	1	1	1	1	217000	217000	217000	217000	217000	217000	CGB, CGBMOE, and other line partners
	Conduct quarterly meetings to share progress on NSA activities	Quarterly meetings held to share progress on NSA activities	Number of quarterly meetings held to share progress on NSA activities	0	1	1	1	1	1	1	1	1	3666600	3666600	3666600	3666600	3666600	3666600	CGB, CGBMOE, and other line partners
SI 2: Enhance capacity, resource mobilization, and investments by non-state actors in the implementation of efficient NSA interventions	Sensitization of non-state actors (including women, youth, and PWD on NSA initiatives	Sensitizations of non-state actors held (including women, youth, and PWD on NSA initiatives	Number of sensitizations of non-state actors held (including women, youth, and PWD on NSA initiatives	0	7000	7000	7000	7000	7000	7000	7000	7000	4130000	4130000	4130000	4130000	4130000	4130000	CGB CGB-MOA; MOE, MOH, MOW, and any other line partners

FOCUS AREA 5: COMMUNITY EMPOWERMENT TO ENGAGE IN VIABLE NSA INITIATIVES

Promote linkages to financial and insurance services for community-based organizations	Mapping of the CBOs and the service providers	CBOs and service providers mapped	Number of CBOs and service providers mapped	0	35	35	35	35	35	35	35	35	535500	535500	535500	535500	535500	CGB/MSN	
			Number mapping reports	0	35	35	35	35	35	35	35	35	0	0	0	0	0	CGB/MSN	
	Train farmers on Agri-financing.	Farmer's training and forum on Agri-financing organized	Number of farmers' training and forums on agri-financing organized	0	0	35	35	35	35	35	35	35	1745100	1745100	1745100	1745100	1745100	CGB/MSN	
			% of farmers reported utilizing the Agri financing service	0	0	25%	50%	75%	80%				0	0	0	0	0	CGB/MSN	
Promote social accountability systems through community advocacy and outreach.	Conduct sensitization forums for gender and disability mainstreaming in agriculture	Sensitization forum for gender and disability mainstreaming in agriculture conducted	Number of forums for gender mainstreaming conducted	0	35	35	35	35	35	35	35	35	1113000	1113000	1113000	1113000	1113000	CGB/MSN	
			Number of PWDs mainstreamed in Agriculture	0	0	400	400	400	400	400	400	400	1600000	1600000	1600000	1600000	1600000	CGB/MSN	
			Percentage of women included in agri- business activities	0	0	50%	50%	50%	50%				0	0	0	0	0	CGB/MSN	
	Conduct community outreach on social accountability in Agri-nutrition	Community outreaches conducted	Community outreaches conducted	0	8	8	8	8	8	8	8	8	1984800	1984800	1984800	1984800	1984800	CGB/MSN	
SUB TOTALS													9,971,900	9,736,400	9,200,900	9,736,400	9,736,400		
FOCUS AREA 6: MONITORING, EVALUATION, AND KNOWLEDGE MANAGEMENT OF NSA INTERVENTIONS																			
Strategic Objective: To build an effective monitoring and evaluation system at all levels																			
Strategic Action	Activities	Outputs	Output Indicator	Timelines & Targets Indicators									Timelines & Budget (Kes '000)					Lead Partner Other Partner(s)	
				2023/2024	2024/2025	2025/2026	2026/2027	2027/2028	2028/2029	2024/ 2025	2025/ 2026	2026/ 2027	2027/ 2028	2028/2029					
Develop a Monitoring and Evaluation system for NSA interventions	Integrate NSA indicators into the existing M&E system	Monitoring and evaluation system for the NSA integrated	Number of NSA M&E systems established	0	0	1	1	1	1	1	1	0	0	5000000	0	0	0	0	Dept Agric, Health, Media, ICT, MSN

	Develop the Agri-Nutrition Indicators handbook	Agri-Nutrition Indicators Handbook	Agri-Nutrition Indicators handbook developed	0	1	1	1	1	1	1	1	1000000	0	0	0	0	Dept Agric, Health, Media, ICT, MSN
	Conduct baseline, midline, and end-line surveys on NSA indicators	Reports on baseline, midline, and endline surveys.	Reports on baseline, midline, and endline surveys.	0	1	0	1	1	1	1	1	1000000	0	1000000	1000000	1000000	Dept Agric, Health, ICT, community, MSN
	Develop NSA data reporting tools	NSA data reporting tools	NSA data reporting tools developed	0	1	1	1	1	1	1	1	-	-	-	-1,000,000	-1,000,000	Dept Agric, Health, ICT, MSN
	Sensitize implementation teams on NSA tools and the Indicator's handbook	Sensitize implementation teams on NSA tools and the Indicator's handbook	Number of people sensitized on the NSA tools and indicators handbook	0	10	10	10	10	10	10	10	1500000	1500000	1500000	1500000	1500000	Dept Agric, Health, community, MSN
	Conduct quarterly data review meetings on NSA activities, indicators, programs/ projects	Conduct quarterly data review meetings on NSA activities, indicators, programs/ projects	Number of quarterly data review meetings on NSA activities, indicators, programs/ projects conducted.	0	4	4	4	4	4	4	4	400000	400000	400000	400000	400000	Dept Agric, Health, farmer representative, MSN
Promote NSA knowledge management at all levels of operation	Hold quarterly stakeholders' feedback and review meetings	Hold quarterly stakeholders' feedback and review meetings	Number of quarterly meetings conducted	0	4	4	4	4	4	4	4	940000	940000	940000	940000	940000	MSN
	Annual documentary and dissemination of NSA best practices and lessons learnt	Annual production of a documentary and dissemination of NSA best practices and lessons learnt	Number of documentaries produced.	0	1	1	1	1	1	1	1	500000	500000	500000	500000	500000	Dept Agric, Health, ICT, community, MSN
	Monthly update of NSA information in the food systems dashboard	Update of NSA information in the food systems dashboard	Number of updates in the food systems dashboard	0	12	12	12	12	12	12	12	0	0	0	0	0	Dept Agric, Health, MSN
	Update the county websites, agriculture platforms to function as an NSA knowledge repository	Update the county websites and agriculture platforms	Number of updates on the county websites and agriculture platforms	0	52	52	52	52	52	52	52	0	0	0	0	0	Dept Agric, Health, MSN

[illegible]

NOTES

[illegible]

This image shows a full page of blank, lined paper. It features approximately 20 evenly spaced horizontal grey lines across its entire width, providing a template for handwriting practice or general note-taking. The margins are consistent on all sides.

OUR PARTNERS





REPUBLIC OF KENYA



Email: info@busiacounty.go.ke

Website: www.busiacyounty.go.ke

Address: [P.O. Box Private Bag, 50400-Busia, Kenya](#)
